



GAT MONTHLY MEMBERSHIP PROGRESS REPORT

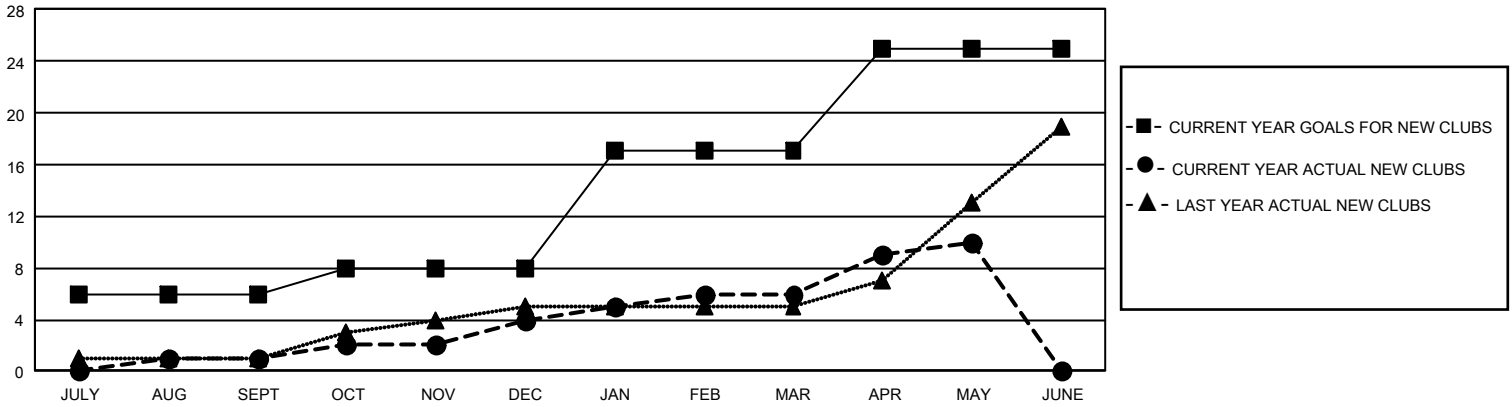
Results as of: 5/31/2026

GMT Constitutional Area 3, Group F

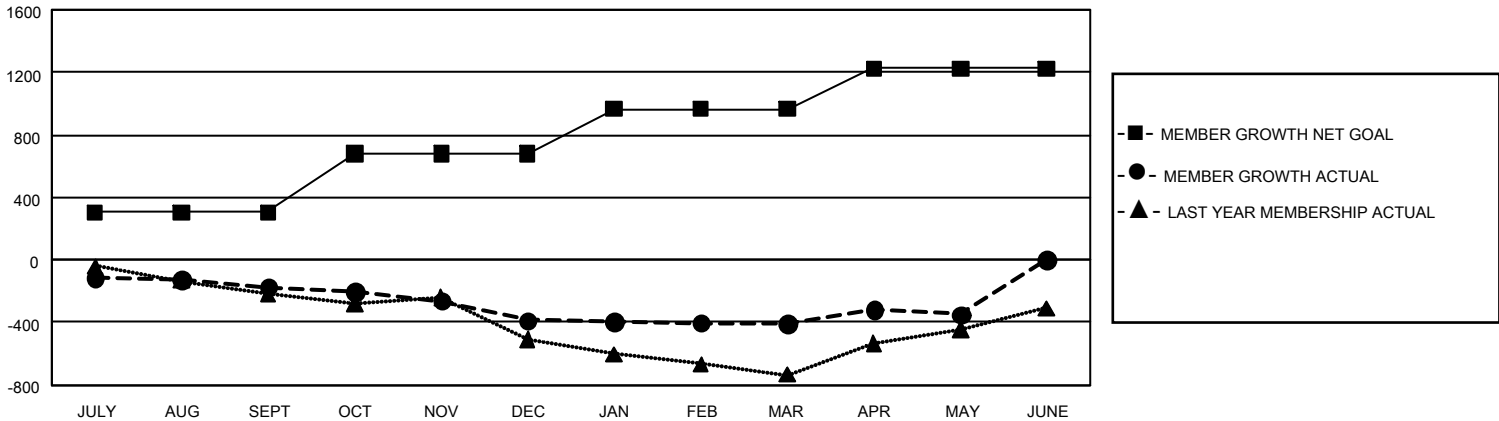
REPORT DOES NOT INCLUDE CLUBS IN UNDISTRICTED AREAS.

Clubs				Members			
RESULTS FOR 2025-2026				RESULTS FOR 2025-2026			
QUARTER	NEW CLUB GOAL	NEW CLUBS	DROPPED CLUBS	QUARTER	MEMBER GROWTH NET GOAL	MEMBER GROWTH ACTUAL	DROPPED MEMBERS ACTUAL (including transfers)
JULY/AUG/SEPT	18	1	1	JULY/AUG/SEPT	305	281	403
OCT/NOV/DEC	6	3	5	OCT/NOV/DEC	375	384	561
JAN/FEB/MAR	27	2	0	JAN/FEB/MAR	284	270	259
APR/MAY/JUNE	24	4	0	APR/MAY/JUNE	260	318	245

GOALS AND ACTUAL NEW CLUBS CUMULATIVE



GOALS AND ACTUAL MEMBERS CUMULATIVE



DROPPED CLUBS: 6	245 CLUBS OF 467 ADDED 1 OR MORE NEW MEMBERS	<u>GENDER DISTRIBUTION</u>	
<u>DROPPED MEMBERS</u>		MALE	5,710 (49.07%)
DECEASED	74	FEMALE	5,906 (50.76%)
CLUB CANCELLED	23	NON BINARY	0 (0.00%)
OTHER	1,356	PREFER NOT TO ANSWER	20 (0.17%)
TOTAL	1,453	TOTAL FAMILY UNIT MEMBERS	4,986
	CLICK HERE FOR CUMULATIVE MEMBERSHIP DATA	FAMILY MEMBERS PAYING HALF DUES	2,672